



# ANGLOAMERICAN GREEN SWAN PROPOSAL: SEIZING COMPETITIVE ADVANTAGE WITH CIRCULAR METHODS

## CIRCULARITY TEAM:

PJ CONNOLLY  
SEAN RECKERT  
JOHN MURRAY  
SAHARA JAMES

# CURRENT STANDING

---

## INDUSTRY POSITIONING

- 8th largest mining company in the world
- Top competitors: Glencore, BHP Group, & Rio Tinto
- Distinguished by responsible mining practices
- On a trajectory towards carbon neutral mining
- *Aiming to transition to being a “materials” company*

## FUTURESMART MINING™

- **Concentrating the Mine:** Increasing precision in mining with minimal energy, water, and capital intensity.
- **Intelligent Mine:** Reducing the uncertainty and variability of mining by using big data to inform AI machinery
- **Modern Mine:** Reducing health and safety risks to employees by using digital remote technologies
- **Water-less Mine:** Reducing water dependency

# PROPOSAL

---

## CIRCULAR GREEN SWAN PROPOSAL

To create a new revenue stream by re-mining existing tailings storage facilities (TSFs) for residual metals & minerals and marketing these to manufacturers as “rescued materials.”

### PART 1

Re-mining tailings storage facilities for “rescued materials”

### PART 2

Creating a shared tailings storage facilities database platform

# VALUE DRIVERS

---

**INCREASE POSITIVE**

## REVENUE GENERATION

Corner market on reclassified "rescued" material

## BRAND ENHANCEMENT

Unique selling proposition  
Increased sustainability standing

**TANGIBLE**

**INTANGIBLE**

## COST SAVINGS

Savings costs on extracting virgin materials

## RISK REDUCTION

Reduce liabilities associated with labor and environmental hazard concerns

**REDUCE NEGATIVE**

# GEOGRAPHY: CHILE

---

PEREZ CALDERA - 21 MILES FROM  
SANTIAGO, CHILE. 5.6MILLION POP.



# FAVORABLE ECOSYSTEM

---

## Transparency

National  
Observatory of  
Tailings Deposits

## Collaboration

Government  
EcoMetales  
Codelco

+

## Investment

\$66B by 2027  
Mining Country

## Policy

New National  
Tailings Policy

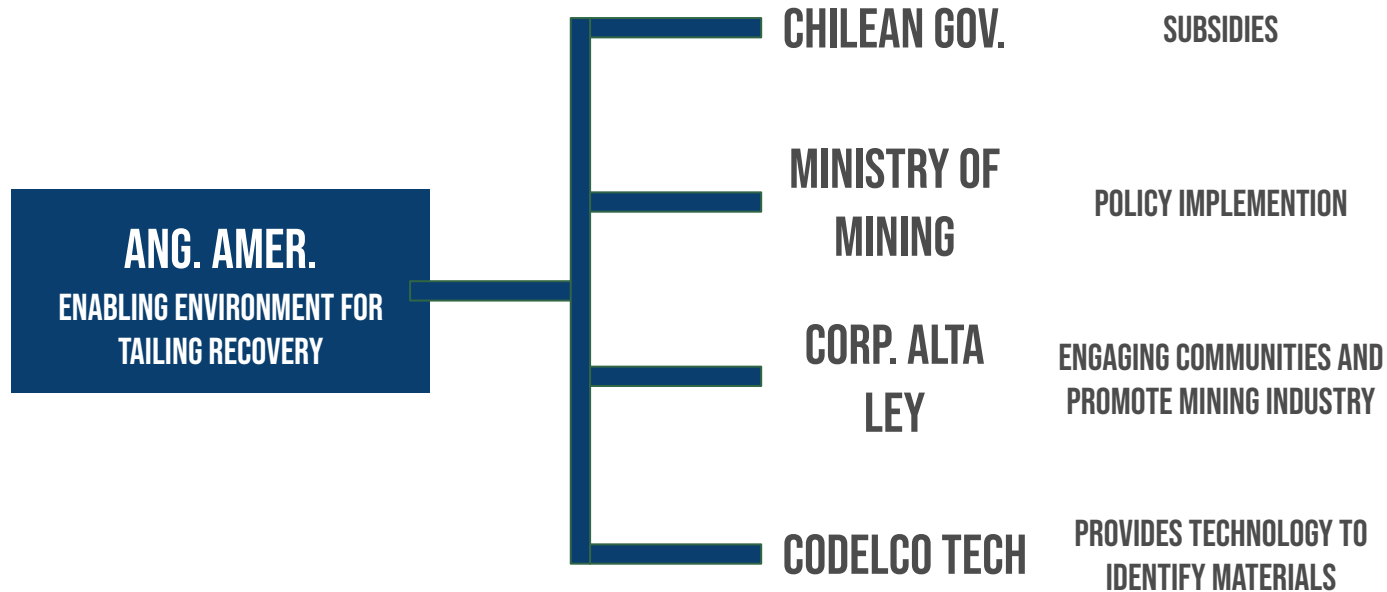
## Removing Roadblocks

“Chile has new regulations for new uses of artificial tailings deposits that facilitates using the tailings as raw material for construction like cement, bricks and asphalt; and is compiling a “bank of ideas” relating to the remediation, reprocessing and new uses of tailings deposits.”

*Anthony Barich*

# PUBLIC SECTOR & PARTNERSHIPS

---



# METHODOLOGY TIMELINE

---

## IMMEDIATE

Part 2:  
TSF AI Tool

## 15 YEAR

Production and  
Preliminary  
reprocessing

## 5+ YEARS AFTER CLOSURE

Material  
reclassification  
and distribution



## 5 YEARS BEFORE OPENING

Prospecting,  
exploration,  
mine-site design

## 5 YEAR BEFORE CLOSURE


Tailing and waste  
water reprocessing



# USE THE GREEN SWAN TO OVERCOME THE FOUR MAJOR BARRIERS

---



A construction worker wearing a grey hard hat, safety glasses, and an orange high-visibility vest over a light blue shirt is shown in profile, looking towards the right. He is holding a black walkie-talkie. The background features a large, light blue reservoir or lake, with an industrial or construction site visible in the distance. The landscape is hilly and arid, with mountains in the far background under a clear blue sky with some light clouds.

**THANK YOU  
QUESTIONS?**